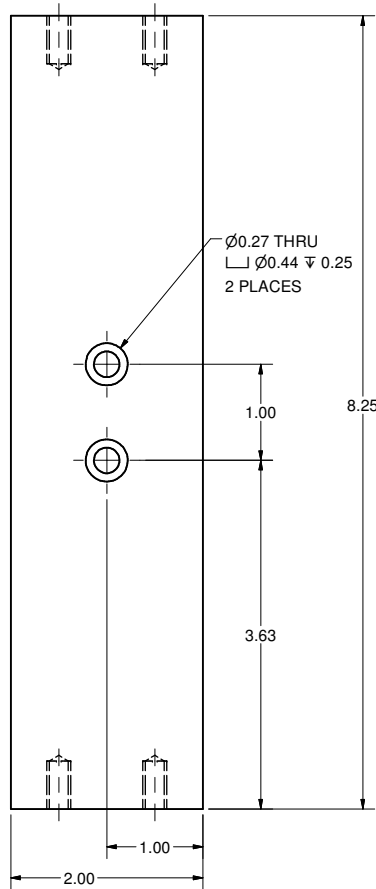
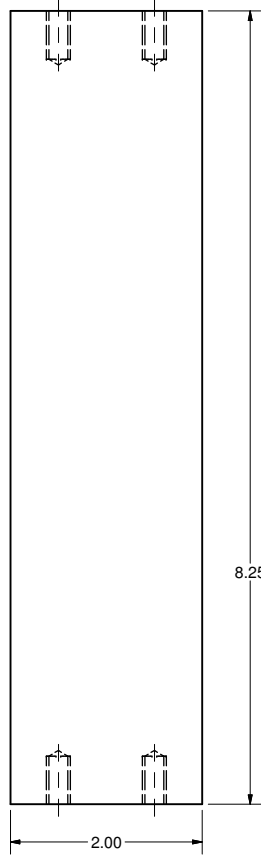


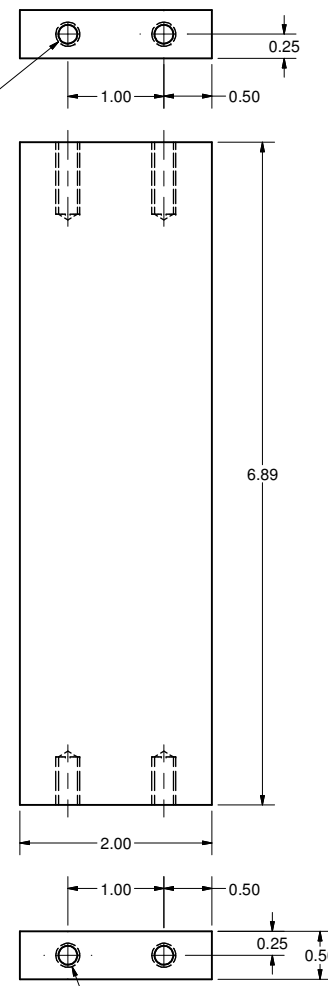
REVISIONS				
SYM.	ZONE	DESCRIPTION	DATE	APP.



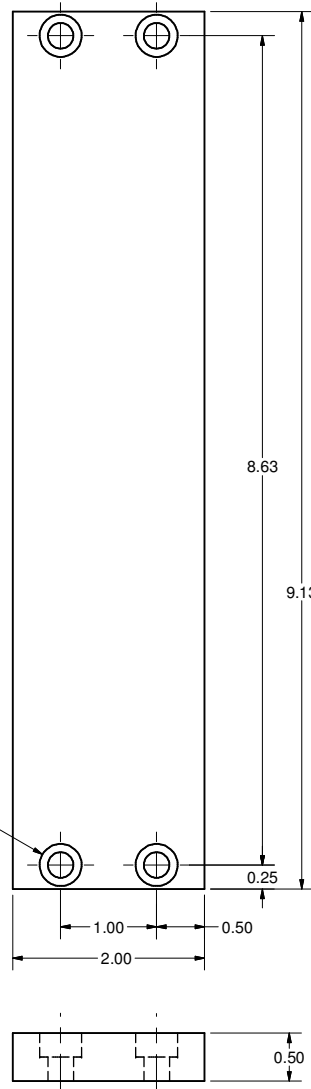
**5 Cold Coupler Bake Support**  
FILE NAME: 7102-129  
SHEET NO.: 1  
DFT. SCALE: 1:1  
MATERIAL: 6061-T6 ALUM.  
QTY: 2 Per Asm (8 Total)  
NOTES:



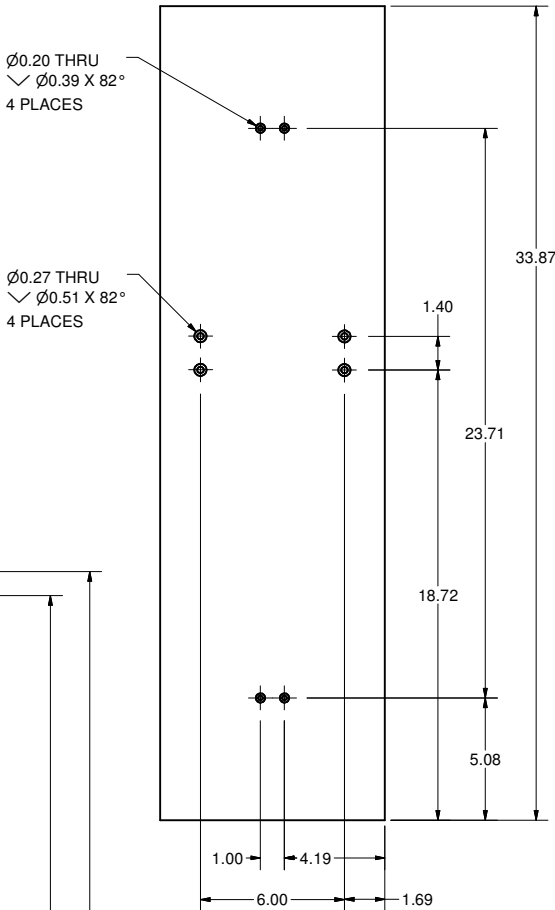
**6 Cold Coupler Bake Support Top**  
FILE NAME: 7102-129  
SHEET NO.: 1  
DFT. SCALE: 1:1  
MATERIAL: 6061-T6 ALUM.  
QTY: 2 Per Asm (8 Total)  
NOTES:



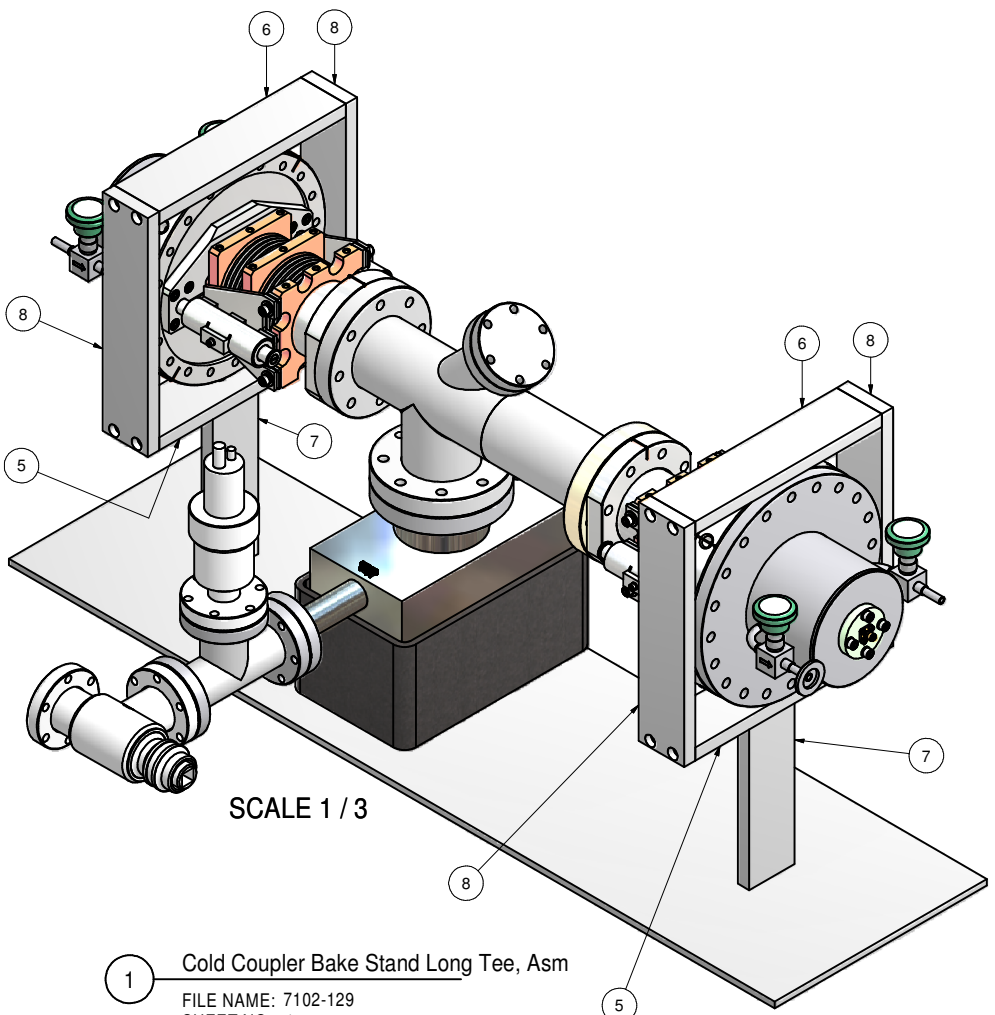
**7 Cold Coupler Support To Base For Long Tee**  
FILE NAME: 7102-129  
SHEET NO.: 1  
DFT. SCALE: 1:1  
MATERIAL: 6061-T6 ALUM.  
QTY: 2 Per Asm (4 Total)  
NOTES:



**8 Cradle Upright**  
FILE NAME: 7102-129  
SHEET NO.: 1  
DFT. SCALE: 1:1  
MATERIAL: 6061-T6 ALUM.  
QTY: 4 Per Asm (16 Total)  
NOTES:



**3 Coupler Bake Stand Base**  
FILE NAME: 7102-129  
SHEET NO.: 1  
DFT. SCALE: 1:1  
MATERIAL: 6061-T6 ALUM.  
QTY: 1 Per Asm (2 Total)  
NOTES:



**1 Cold Coupler Bake Stand Long Tee, Asm**  
FILE NAME: 7102-129  
SHEET NO.: 1  
DFT. SCALE: 1/3  
MATERIAL: As Noted  
QTY: 2 Req'd  
NOTES:

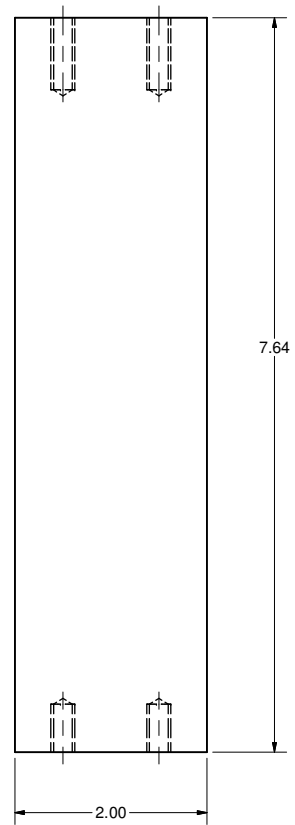
FOR MACHINING LUBRICANT USE ONLY  
ALKALINE DETERGENT LUBRICANT CIMSTAR 40  
OR EQUIVALENT APPROVED BY CORNELL LEPP

TECHNICAL RESOURCE APPROVALS REQUIRED BEFORE FABRICATION			
	OK	DATE	N/A
DRAFTING (O'Connel):			
MACHINE SHOP (Kaminski):			
CHEMISTRY (Conklin):			
ELECTRONICS SHOP (Barley):			
FURNACE BRAZING (Sherwood):			
BEAM WELDING (Sears):			
WELDING OTHER (Gallagher):			
UTILITIES INTEGRATION (Gallagher):			
STOCKROOMS (Lockwood):			

ITEM	DWG. NO.	DESCRIPTION	QUANTITY	REMARKS	REV.
8	Sh.1	Cradle Upright	4		
7	Sh.1	Cold Coupler Support To Base For Long Tee	2		
6	Sh.1	Cold Coupler Bake Support Top	2		
5	Sh.1	Cold Coupler Bake Support	2		
3	Sh.1	Coupler Bake Stand Base	1		
PLOT DATE: 11/2/2007 CAD FILE NAME: 7102-129.idw					
UNLESS OTHERWISE SPECIFIED: DIMENSIONS ARE IN INCHES: TOLERANCES ON: .00 ± .010 .000 ± .005 FRACTIONS ± 1/64 ANGLES ± 0.5° ALL SURFACES					
CORNELL UNIVERSITY FLOYD R. NEWMAN LABORATORY ITHACA, NY 14853					
Cold Coupler Baking Stands Cold Coupler Bake Stand Long Tee, Asm					
CHECKED BY: PQ	DRAWN BY: Quigley	DRAWN FOR: Quigley	DATE: 11/1/2007	SCALE: D	7102-129 SH. NO. 1 OF 2
APPROVED BY: PQ					REV.

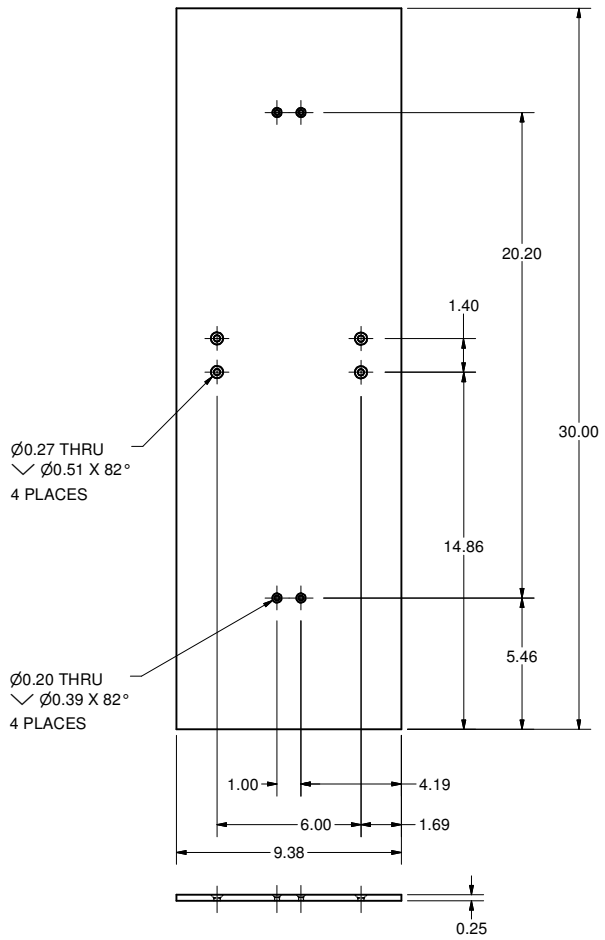
REVISIONS				
SYM.	ZONE	DESCRIPTION	DATE	APP.

1/4-20 UNC - 1B x 0.75 DP.  
2 PLACES

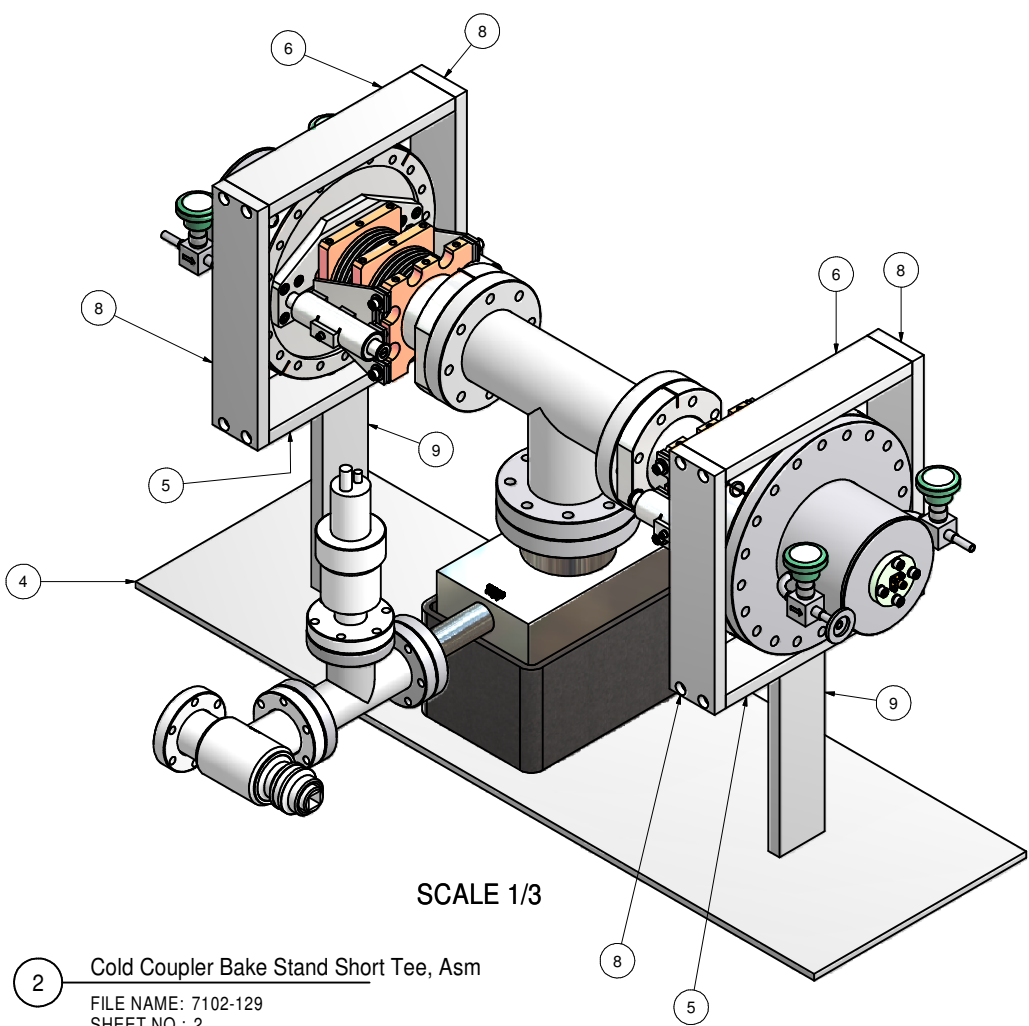


1/4-20 UNC - 1B x 0.50 DP.  
2 PLACES

**9** Cold Coupler Support to Base  
FILE NAME: 7102-129  
SHEET NO.: 2  
DFT. SCALE: 1:1  
MATERIAL: 6061-T6 ALUM.  
QTY: 2 Per Asm (4 Total)  
NOTES:



**4** Coupler Bake Stand Base Short  
FILE NAME: 7102-129  
SHEET NO.: 2  
DFT. SCALE: 1:1  
MATERIAL: 6061-T6 ALUM.  
QTY: 1 Per Asm (2 Total)  
NOTES:



**2** Cold Coupler Bake Stand Short Tee, Asm  
FILE NAME: 7102-129  
SHEET NO.: 2  
DFT. SCALE: 1/3  
MATERIAL: As Noted  
QTY: 2 Req'd.  
NOTES:

SCALE 1/3

FOR MACHINING LUBRICANT USE ONLY  
ALKALINE DETERGENT LUBRICANT CIMSTAR 40  
OR EQUIVALENT APPROVED BY CORNELL LEPP

TECHNICAL RESOURCE APPROVALS REQUIRED BEFORE FABRICATION			
	OK	DATE	N/A
DRAFTING (O'Connell):			
MACHINE SHOP (Kaminski):			
CHEMISTRY (Conklin):			
ELECTRONICS SHOP (Barley):			
FURNACE BRAZING (Sherwood):			
BEAM WELDING (Sears):			
WELDING OTHER (Gallagher):			
UTILITIES INTEGRATION (Gallagher):			
STOCKROOMS (Lockwood):			

PRINT DISTR.	REV.
7102-129 SH. NO. 2 OF 2	

ITEM	DWG. NO.	DESCRIPTION	QUANTITY	REMARKS	REV.
9	Sh.2	Cold Coupler Support To Base	2		
8	Sh.1	Cradle Upright	4		
6	Sh.1	Cold Coupler Bake Support Top	2		
5	Sh.1	Cold Coupler Bake Support	2		
4	Sh.2	Coupler Bake Stand Base Short	1		
PLOT DATE: 11/2/2007 CAD FILE NAME: 7102-129.idw					
UNLESS OTHERWISE SPECIFIED: DIMENSIONS ARE IN INCHES: TOLERANCES ON: .00 ± .010 .000 ± .005 FRACTIONS ± 1/64 ANGLES ± 0.5° ALL SURFACES					
CORNELL UNIVERSITY FLOYD R. NEWMAN LABORATORY ITHACA, NY 14853					
Cold Coupler Baking Stands Cold Coupler Bake Stand Short Tee, Asm					
CHECKED BY: PQ	DRAWN BY: Quigley	DRAWN FOR: Quigley	DATE: 11/1/2007	SCALE: D	7102-129 SH. NO. 2 OF 2
APPROVED BY: PQ					REV.